

ARCH CAPE - SOUTH OF CREEK

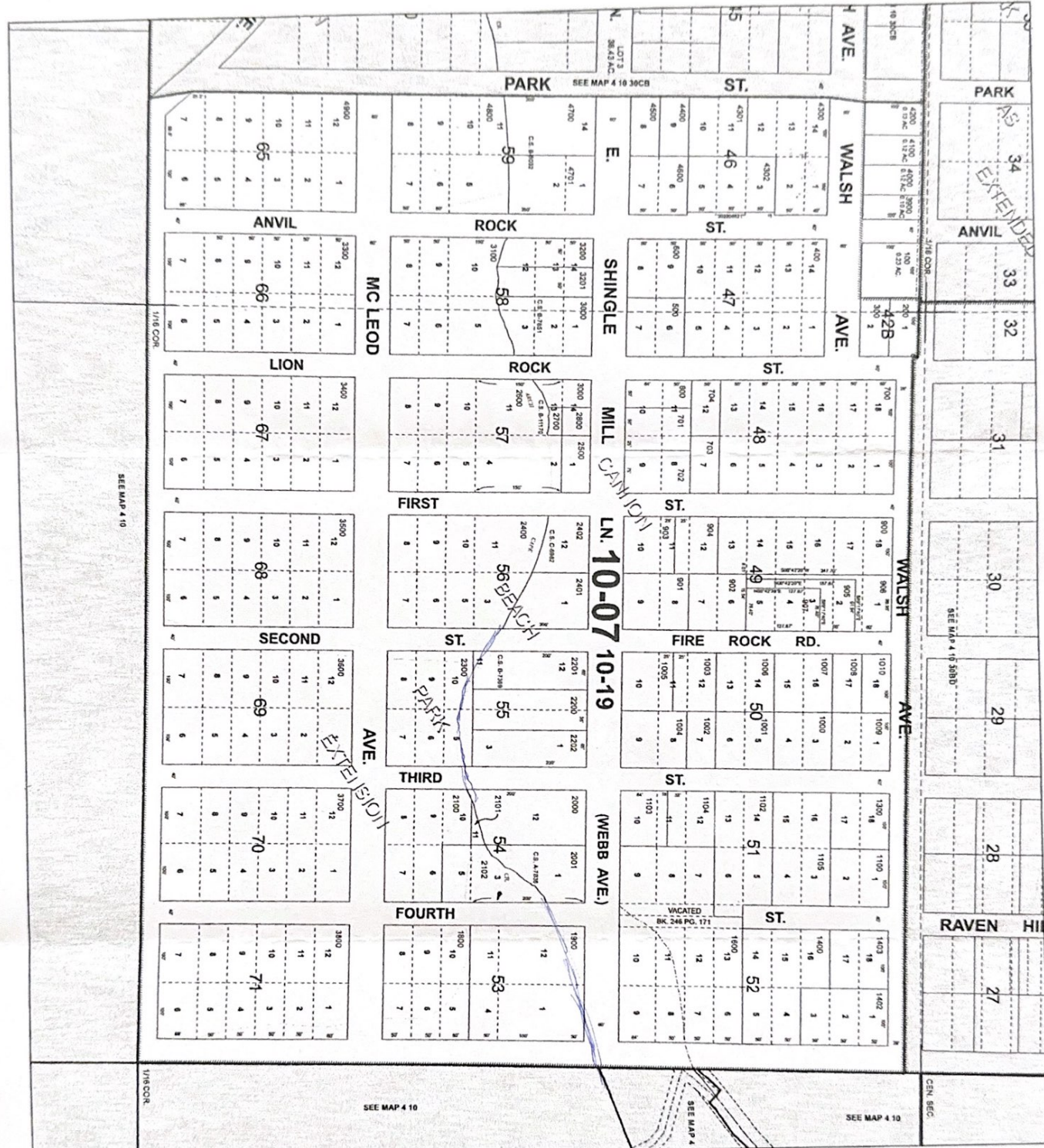
List of lots for sale, each Tax Lot contains 12 to 22 - (5000 sq feet lots), platted 50 feet by 100 feet, with 40 feet wide platted roads.

41030CA	02100
41030CA	02300
41030CA	02400
41030CA	02600
41030CA	02700
41030CA	03100
41030CA	03300
41030CA	03400
41030CA	03500
41030CA	03600
41030CA	03700
41030CA	04800
41030CA	04900
41030CB	03600
41030CB	03900
41030CB	04200

Important line items:

1. On Coastal Trail (from Mexico to Canada)
2. North Border approx. 2000 feet of Shingle Mill Creek
3. South Border approx. 2000 feet border to Oswald State Park
4. Two blocks to sand and water
5. 60 miles from Portland
6. This area is zoned Residential
7. Approx 160 - 50 foot by 100 foot lots
8. Located in a Timber Reserve - total taxes is approx. \$500/year
9. Arch Cape has Sewage/Water/Electricity

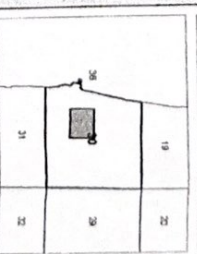
020424_ARCH_CAPE



4 10 30 CA
 CLATSOP COUNTY
 NE 1/4 SW 1/4 SEC. 30 T4N R10W W1M
 0 62.5 125 250 ft
 Scale 1" = 200'



1	2	3	4	5	6	7	8	9	10	11	12
13	14	15	16	17	18	19	20	21	22	23	24
25	26	27	28	29	30	31	32	33	34	35	36



CANCELLED TAXLOT NUMBERS
 1101 1401 1700 4103
 1200 1500 1801 3001

FOR ADDITIONAL MAPS VISIT OUR WEBSITE AT
WWW.CO.CLATSOP.OL.US

This map was produced using Clatsop County GIS data. It is not a survey and does not constitute a warranty of any kind. Clatsop County is not responsible for any map errors, omissions, misuses, or misinterpretations.
 PLOT DATE: 12/09/2022
 4 10 30 CA



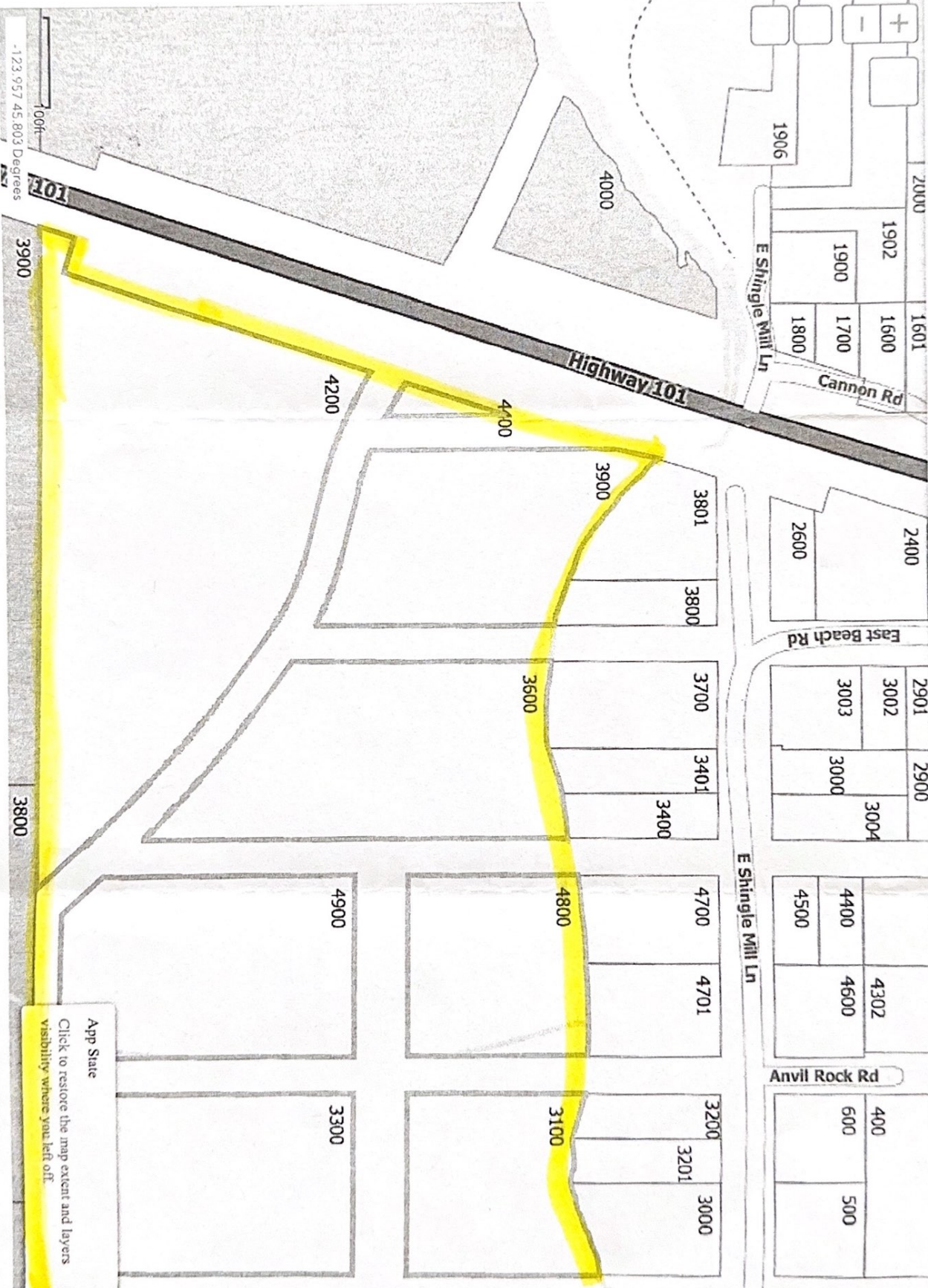


2000	1601
1906	1902
1900	1600
1800	1700
E Shingle Mill Ln	
Cannon Rd	

2400	2901	2900
2600	3002	3000
	3003	3004
East Beach Rd		

4501	4302
4500	4400
	4600
E Shingle Mill Ln	

400	500
600	
Anvil Rock Rd	



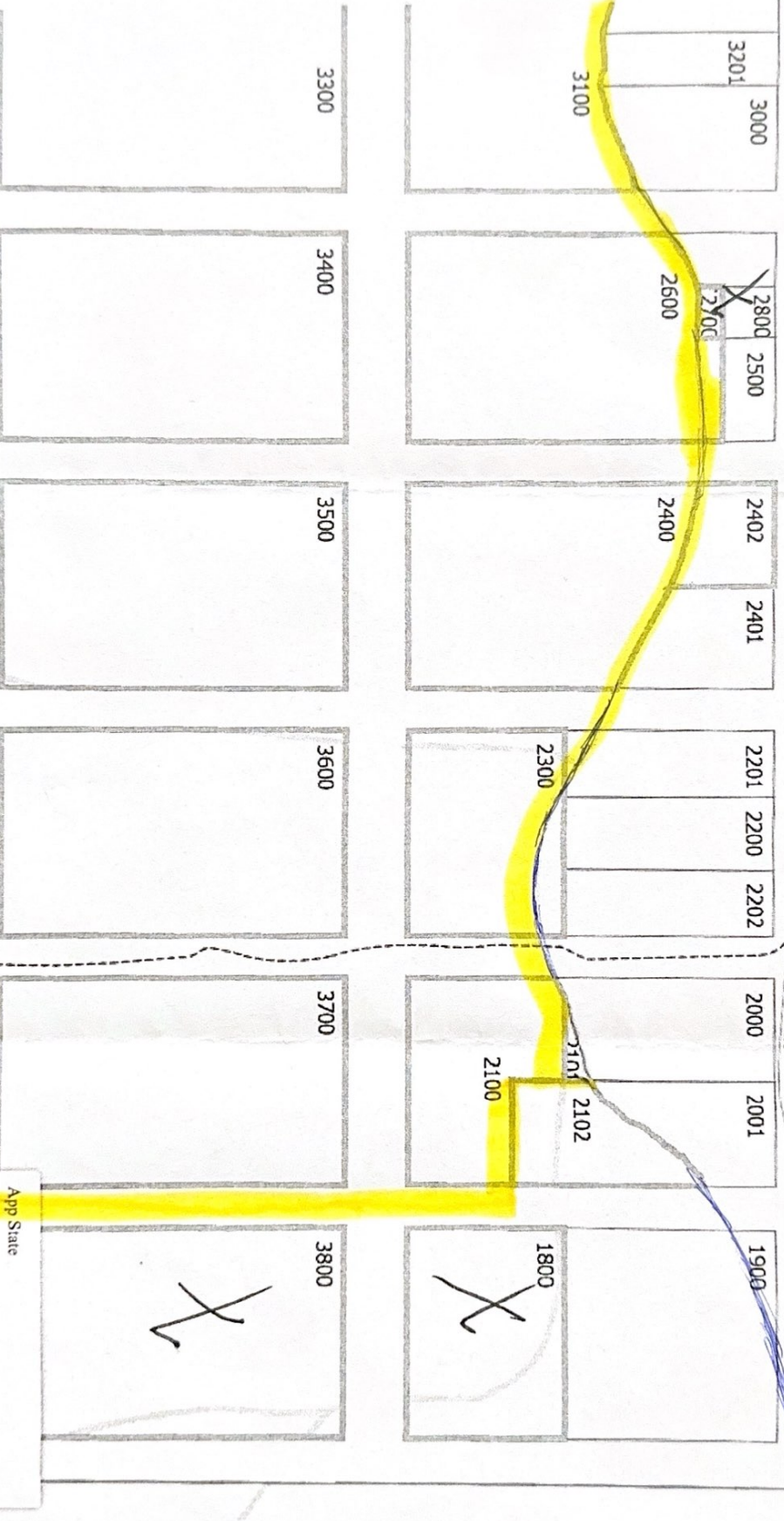
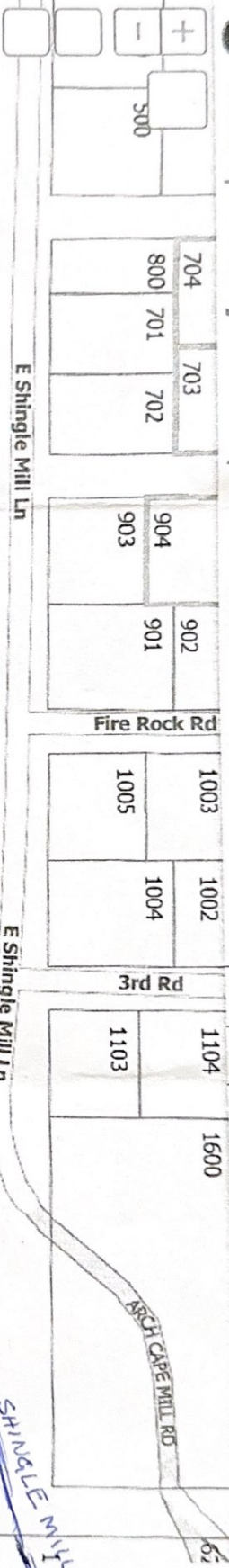
100ft
-123.957 45.803 Degrees

App State
Click to restore the map extent and layers
visibility where you left off.



Clatsop County Webmaps

Property Info App Records A:



3800 100ft 3900
 -123.952 45.804 Degrees

App State
 Click to restore the map extent and layers
 visibility where you left off.

